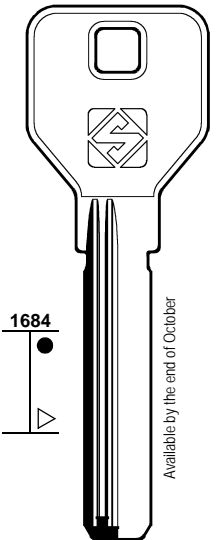

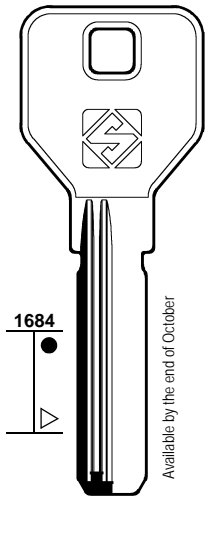
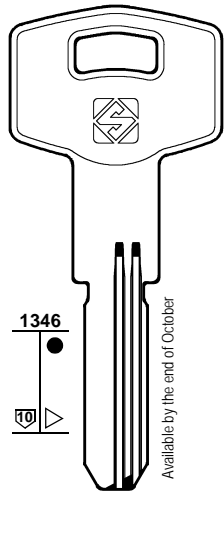
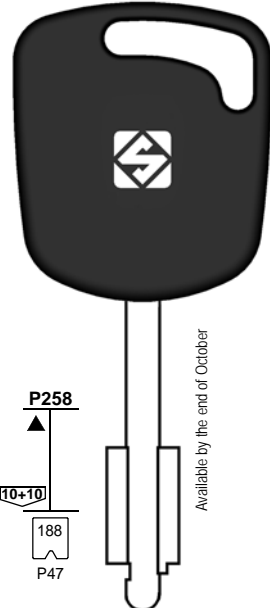
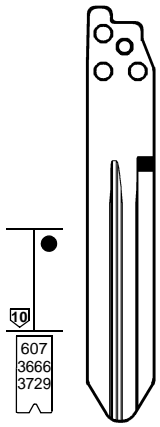
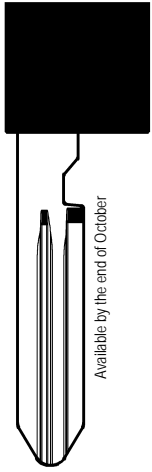


New Keys / Chiavi Nuove / Neue Schlüssel / Nouvelles Clés
Llaves Nuevas / Chaves Nuevas

FOR: PER:		CINA	KALE	FOR / PER	
		 <p>1684 Available by the end of October</p> <p>RC8R</p>  <p>RC9R</p>  <p>1684 Available by the end of October</p> <p>RC10R</p> <p>BAODEAN MASTER LOCK - MSM</p> <p>BAODEAN - HOOPLY MASTER LOCK - MSM</p>	 <p>1346 Available by the end of October</p> <p>KLE11</p> <p>MSM (PRC) + CINA</p>	<p>BAODEAN (PRC) + CINA</p> <p>CINA (RC) BAODEN HOOPLY MASTER LOCK MSM</p> <p>HOOPLY (PRC) + CINA</p> <p>KALE (TR)</p> <p>MASTER LOCK (RC) + CINA</p> <p>MSM (PRC) + CINA</p>	
		<p>FORD (EU)</p> <p>NISSAN (J)</p>			
FOR: PER:		FORD	NISSAN		
		 <p>97</p> <p>P258 10+10 188 P47</p> <p>Available by the end of October</p> <p>FO19TE C..... 12345</p>	 <p>100</p> <p>607 3666 3729</p> <p>Available by the end of October</p> <p>NSN14TA 1-22185</p>	 <p>100</p> <p>607 3666 3729</p> <p>Available by the end of October</p> <p>NSN14TBP 1-22185</p>	<p>01 COMMERCIAL GROUP GRUPPO COMMERCIALE PREISEGRUPPE GROUPE COMMERCIAL GRUPO COMMERCIAL GRUPO COMERCIAL</p> <p>www.silca.biz</p>

Car Keys Guide / Guida Chiavi Auto / Marktführer für Autoschlüssel / Guide Clés pour Voitures
 Guía Llaves para Coches / Guia Chaves para Carros

New Updates

1	2	2a	3	3a	3b	E1+E2		6	42+71	72	43 44a	12	15
						GTI COMPATIBLE		IGNITION 					
CAR MAKE MODEL	FROM	TO	SILCA REF.	SILCA REF.	SILCA REF.	COPY	GEN.	TRANSP. TYPE	FAST COPY PLUS RW4 PLUS FAST COPY / RW4	FAST COPY PLUS RW4 PLUS	FAST COPY RW4	STP	
For more info on the uses of car keys, refer to the Silca Electronic Key Catalogue:													
LDV®													
CONVOY	1998	2000	FO19MH	FO19TE	FO19FH*	Y	Y	TEXAS	4C	Y	P-BOX		
CUB	1998	2000	FO19MH	FO19TE	FO19FH*	Y	Y	TEXAS	4C	Y	P-BOX		
NISSAN®													
VARIOUS MODELS			NSN14TA										
VARIOUS MODELS			NSN14BP										



IMPORTANT NOTE:

See also the "Vehicle Guide Legend"
 Vedi anche la "Legenda Guida Veicoli"
 Siehe auch die "Fahrzeugschlüssel Erläuterung"
 Voir aussi la "Légende Guide Véhicules"
 Véase también la "Leyenda Guía para Vehículos"
 Veja também a "Legenda Guia para Veículos"

* Blade for "Silca Flip Key" plastic head

® are Registered Trademarks

Security Essen / Essen Fair, Germany

23-26 September 2014

Silca attended the 40th edition of the Security Essen fair, the world's leading exhibition for security and fire prevention, introducing innovative product solutions. These were the highlights.

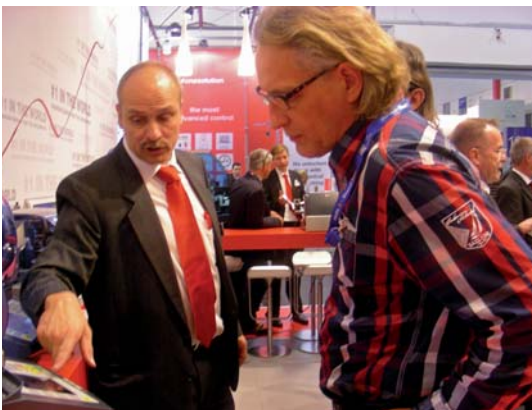


AIR₄ RESIDENTIAL REMOTES

Silca's new line of residential remotes Air₄, suitable for barriers, garage doors and automated gates, was launched, garnering great interest from Silca customers and the attendees of the fair.

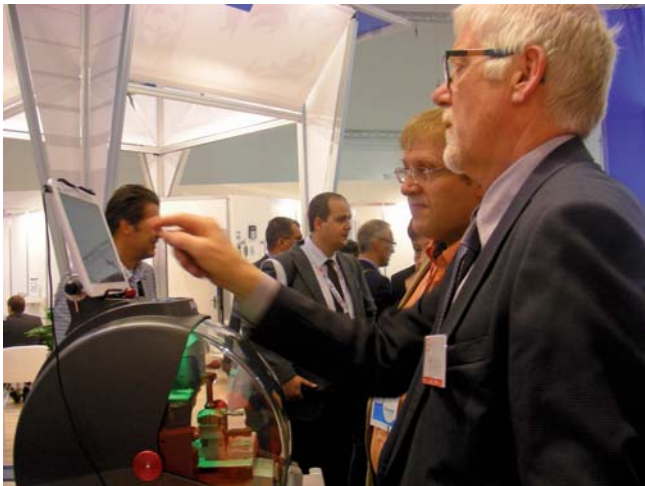
Able to store four different remotes in one device, Air₄ covers the most extensive range of remotes on the European market. Ergonomic, long-lasting and functional, it is set to meet the needs of both Silca partners and final customers. The first will benefit from its simple programming procedures, while the latter will appreciate its smart design, anatomical shape and splash-proof technology.

More info on www.silca.biz



News and photogallery on www.silca.biz

Security Essen / Essen Fair, Germany



All the machines and devices exhibited at the stand were tried out first hand by customers and visitors interested in seeing how they work.

FUTURA AND FUTURA ONE

Futura keeps drawing the attention of specialists operating in the key cutting business. The unrivalled success of the latest tablet-integrated electronic key cutting machine from Silca at the Essen Security fair, where it played a leading role, is testament to that.

Building up on the successful launch of Futura less than a year ago, Silca presented as world premiere Futura One. Due to make its debut at the beginning of 2015, the new electronic machine is characterized by a single cutting station for laser and dimple keys: a customized solution to meet the needs of demanding and money-savvy customers.

PROFESSIONAL REVIEW OF FUTURA

“ Ilico has introduced the Silca branded “Futura” to their collection of fine key machines. Its innovative design and advanced electronics place it at the forefront of new key machine design. [...] capable of producing edge cut, laser cut, dimple, cruciform, tubular and Tibbe style keys, it is 12 machines (6 duplicators and 6 code cutters) in one amazingly small footprint. A first of its kind. ”

Robert Sieveking - The National Locksmith, Oct. 2014

PROTECH PLUS

ProTech Plus, the new highly performing semi-industrial machine for cutting, engraving and sorting different types of keys, ensures increased performances by 30% compared with the previous model, ProTech, guaranteeing the same flexibility and precision of results (up to +/- 0.03 mm tolerances). Silca has also engineered a special model of ProTech to cut Abloy® keys, the first worldwide semi-industrial cutting machine for this type of systems.



News and photogallery on www.silca.biz



SILCA KEY PROGRAMS WEB UPDATE



SILCA KEY PROGRAMS Web Update

www.silca.biz

SILCA KEY PROGRAMS - WEB Update

A new update of the SILCA KEY PROGRAMS software is available to all WEB subscribers. Check out the "News" section of Silca Key Programs on www.silca.biz to know more.

SILCA KEY PROGRAMS - Aggiornamento WEB

È disponibile un nuovo aggiornamento del software SILCA KEY PROGRAMS per tutti gli abbonati WEB. Consulta la sezione "Novità" di Silca Key Programs sul sito www.silca.biz per saperne di più.

SILCA KEY PROGRAMS - Aktualisierung WEB

Für alle WEB Abonnenten ist eine neue Aktualisierung von der Software SILCA KEY PROGRAMS verfügbar. Sehen Sie den Abschnitt "Neuheiten" von Silca Key Programs auf www.silca.biz, um weitere Informationen zu finden.

SILCA KEY PROGRAMS - Mise à jour WEB

Une nouvelle mise à jour du logiciel SILCA KEY PROGRAMS pour tous les abonnements WEB est disponible. Consultez la section "Nouveautés" de Silca Key Programs sur notre site www.silca.biz pour en savoir plus.

SILCA KEY PROGRAMS - Actualización WEB

Una nueva actualización del software SILCA KEY PROGRAMS para todos los abonados WEB está disponible. Visite la sección "Novedades" de Silca Key Programs en el sitio www.silca.biz para más informaciones.

SILCA KEY PROGRAMS - Atualização WEB

Nova atualização do software SILCA KEY PROGRAMS para todos o assinantes WEB está disponível. Consulte a seção "Novidades" de Silca Key Programs no site www.silca.biz para saber mais.

More info on www.silca.biz

NEW**FUTURA PROGRAMS - UPDATES****Futura Version 2.3.0****new series****Futura**

Data update with new series / Aggiornamento dati con nuove serie
Datenaktualisierung mit neuen Serien / Mise à jour des données avec nouvelle
séries / Actualización datos con nuevas series / Atualização dados com novas séries

New items include/Tra le novità/Unter den Neuheiten/Parmi les nouveautés
Entre las novedades/Entre as novidades:

- Abus® (NW52;NW72)
- AGB® (5000)
- Ankerslot® (Infinity / Multi)
- Avocet® (Avocet ABS)
- Bajaj® (India Market)
- Basi® (CX6 Left)
- Corbin® (Evolution)
- Ces® (Ces WSM (5+5+6)
- Dom® (Dom® IX Emergency- Dom® IX Hochrippe (5+5+5)
- Gera® (WS; WSG; 2000 Plus)
- Gerda® (WKM3; WKM1)
- Guard® (Profile G11-G12-G13- G14-G17- EPS/P EP83)
- Esety® (Omega®)
- Hero Honda® (India Market)
- Hugo® (GR 2.55)
- Iseo® (CSR R9 Country N; Plus N)
- Kaba® (Kaba K6 (K6)- Kaba® K8 green (K8G) (4+4+4)- Kaba® K8S (K14)
- Kaba® (Titan; 8S-14 Mixed)
- Keso® (2000S;4000S)
- Lince® (C4;C2)
- Lob® (Lob Nefryt (5P)
- Mahindra® (India Market)
- Mauer® (MLS)
- Miwa® (Miwa® UR- Miwa® U9)
- Mottura® (Mottura C28 (5+4+4)-Mottura C30-C31 (5+4)
- Mul.T.Lock® (Mul.T.Lock® Interactive (115)- (115) MK- (206)- (215)-
(225)- (262)- (264)- Mul-T-Lock MT5
- Pfaffenhain® (Pfaffenhain® Wavy line)
- Tesa®
- Titan® (K66)
- Viro®
- Yale®

Check out the **"Futura"** page on the Silca site to know more.
Consulta il sito Silca alla **pagina "Futura"** per saperne di più.
Sehen Sie den **Seite "Futura"** auf Silca Website, um weitere Informationen zu finden.
Consultez la **page "Futura"** sur notre site Silca pour en savoir plus.
Visite la **página "Futura"** en el sitio Silca para más informaciones.
Consulte a **página "Futura"** no site Silca para saber mais.